

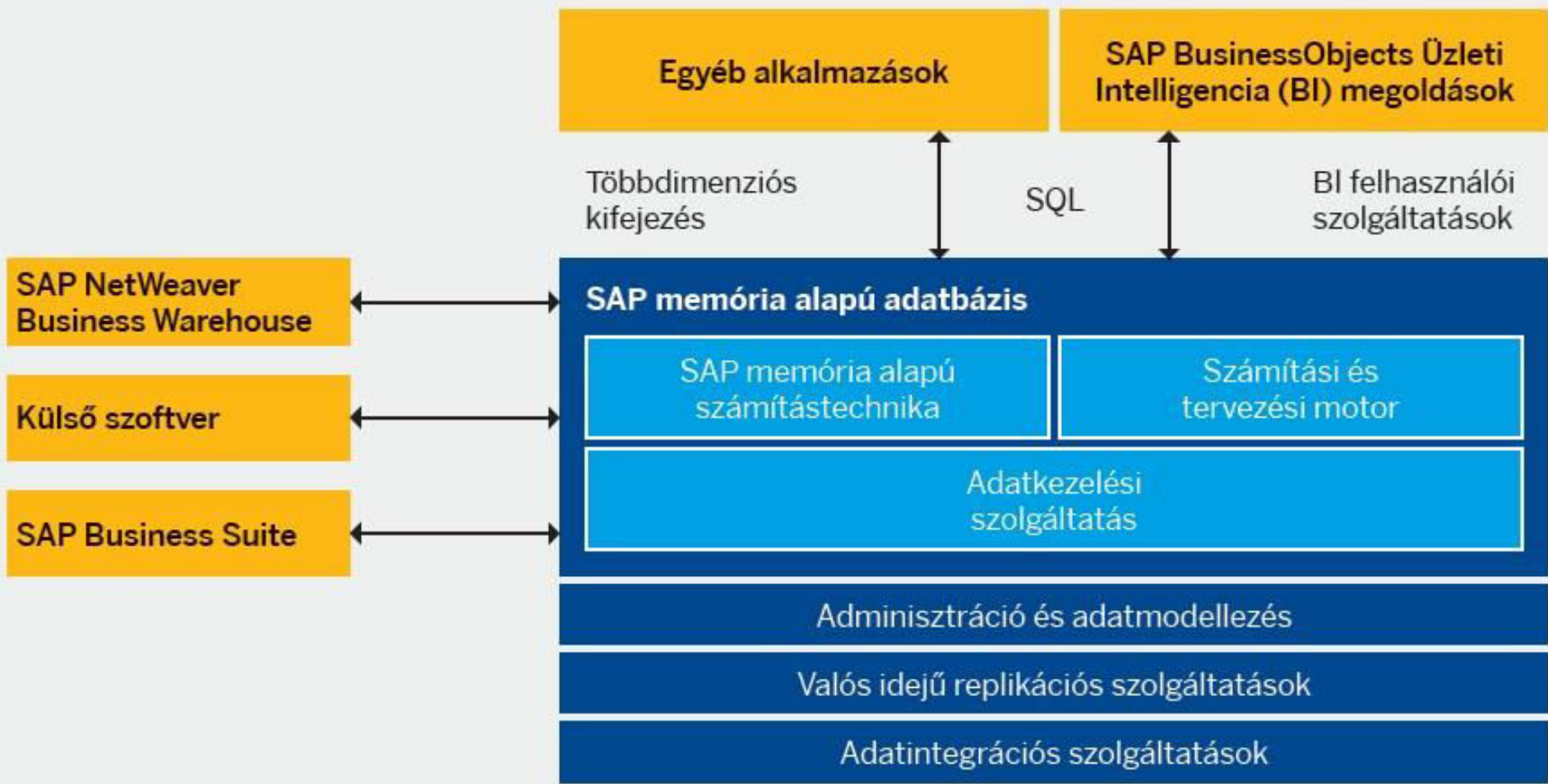
Budapesti Műszaki és Gazdaságtudományi Egyetem  
Közlekedésüzemi Tanszék

# **SAP - HANA™**

## **memória alapú adatbázis**

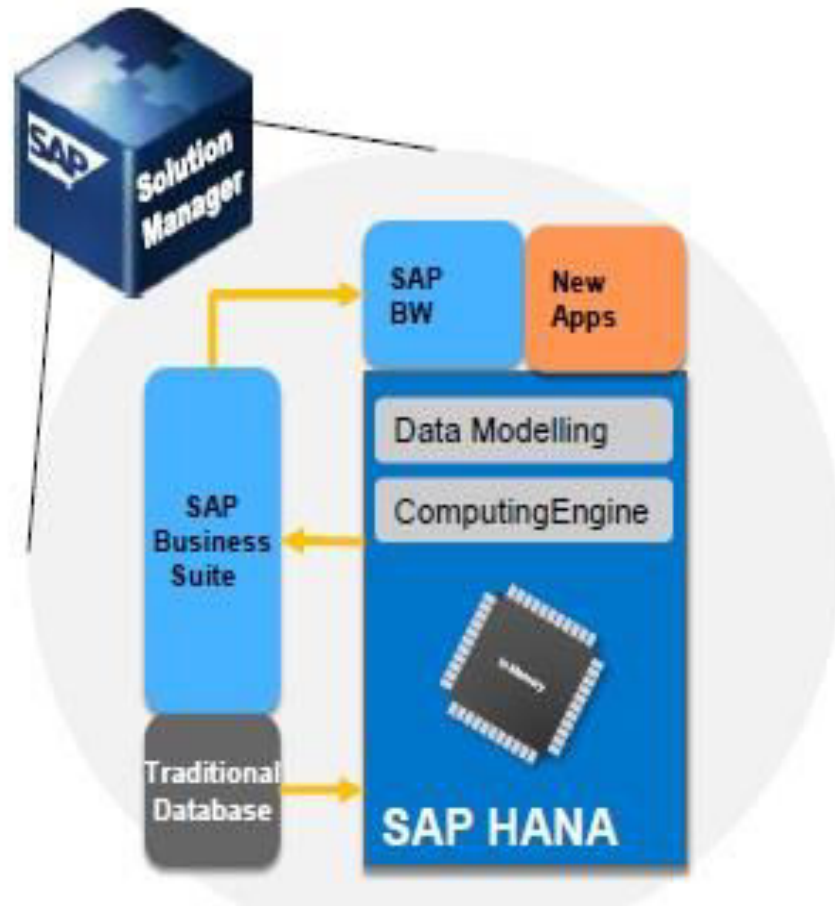
Dr. Tokodi Jenő  
egyetemi adjunktus





SAP® In-Memory Appliance (SAP HANA™) szoftver

# SAP Solution Manager supports SAP HANA in all phases of the application management life cycle



## Build SAP like a Factory

- Central transport mechanism and change control
- E2E Test Management with a central test plan
- E2E Solution Documentation

## Run SAP like a Factory

- Database Administration
- E2E Root Cause Analysis
- System Monitoring
- Monitoring of all BI core operations entities

## Continuous Quality Checks

- Build e.g. Implementation & Configuration checks
- Run e.g. EarlyWatch Alert
- Best Practices e.g. Configuration, Performance/Sizing, Troubleshooting, ...

# Reality #1: Information Explosion





# Reality #2: REAL TIME

- Employees expect the same real-time information experience at work as at home
- Customers expect their business experience to be as satisfying as their personal / consumer experience
- **Both expect instant and correct answers to any question any time**
- Requires operational excellence at moments of risk, product leadership at moments of adoption



# Why The Need for In-Memory Technology

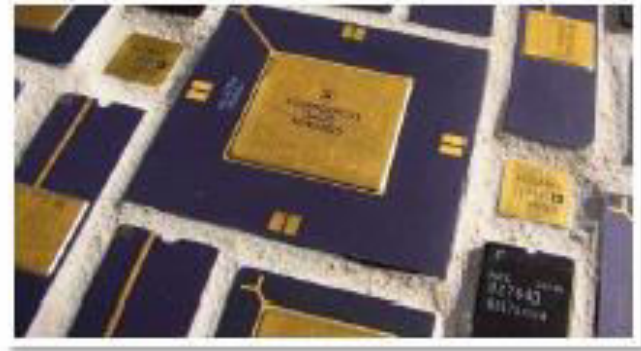
Challenges for both IT and Business



## Data Volume Challenges



## Real time access to Operational Enterprise Systems



## Costly for IT

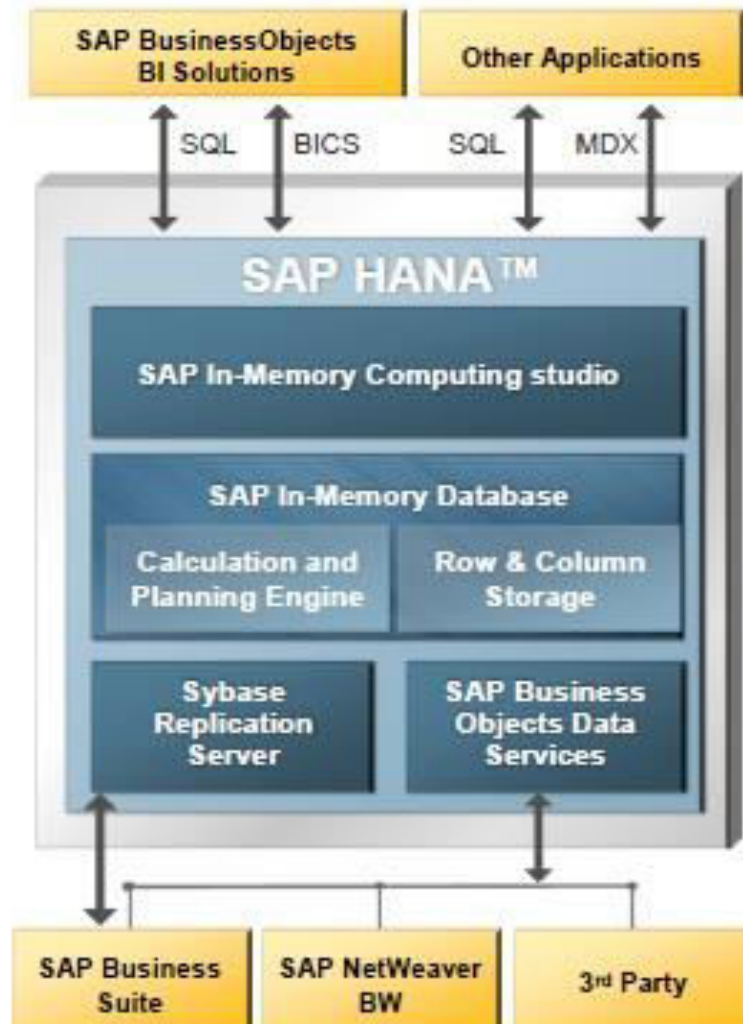
- High costs associated to purchase and maintain hardware to handle ever increasing data volumes
- High TCO to administer/maintain multiple warehouses and transaction systems
- IT NOT the hero - Dissatisfied business users
  - ➔ Processing and analysis

## Challenge for Business

- Inadequate access to real time operational information
- Need to react faster to events impacting operations - long lag time between requests
- Need to uncover trends and patterns in an ad hoc, empowered manner
- Need to improve planning, forecasting,



# SAP In-Memory Appliance (SAP HANA™) Architecture



## SAP HANA™

- In-Memory software + hardware (HP, IBM, Fujitsu, Cisco, Dell)
- Data Modeling and Data Management
- Real-time Data Replication via Sybase Replication Server
- SAP BusinessObjects Data Services for ETL capabilities from SAP Business Suite, SAP NetWeaver Business Warehouse (SAP NetWeaver BW), and 3rd Party Systems

## Capabilities Enabled

- **Analyze information in real-time** at unprecedented speeds on large volumes of non-aggregated data
- **Create flexible analytic models** based on real-time and historic business data



# Run Better with SAP HANA



## Run Smarter

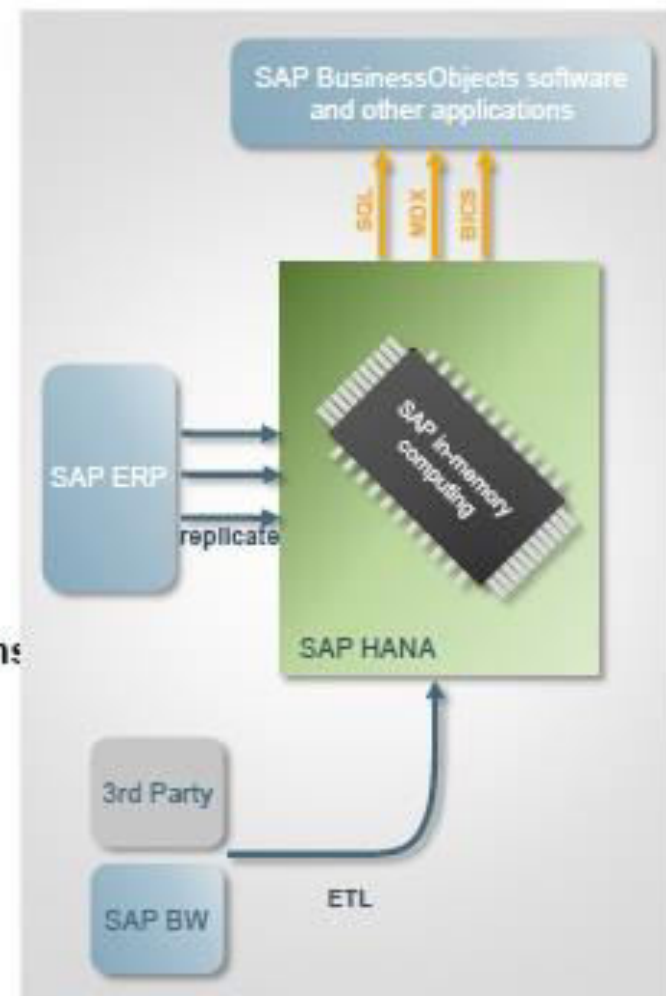
- **Make smarter business decisions** supported by increased visibility on very large volumes of business information
- **React to business events more quickly** through real-time analysis and reporting of operational data

## Run Simpler

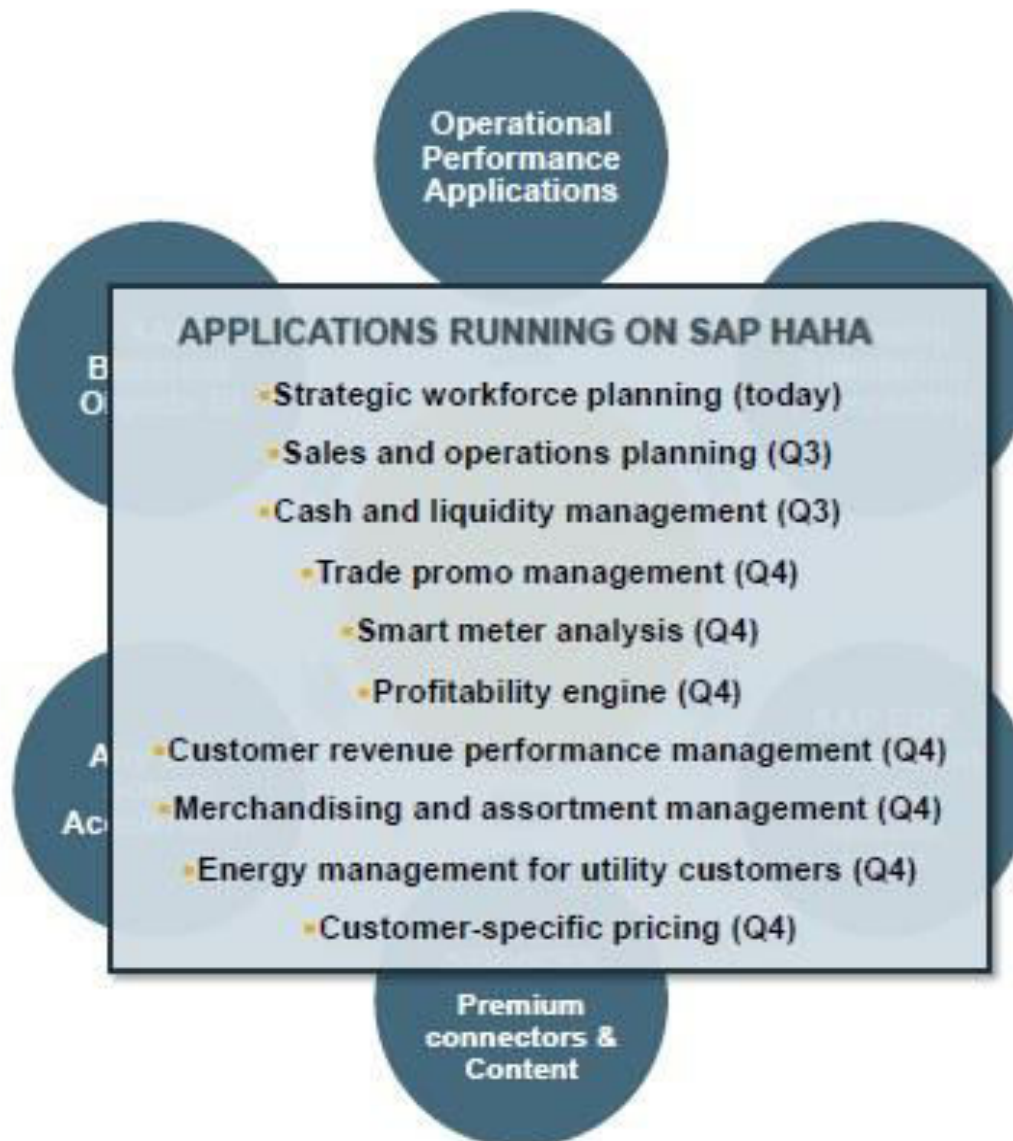
- **Streamline the IT landscape** and reduce TCO
- Groundbreaking yet non-disruptive to existing landscapes
- **Simple to deploy** and fast time to value

## Run Bolder

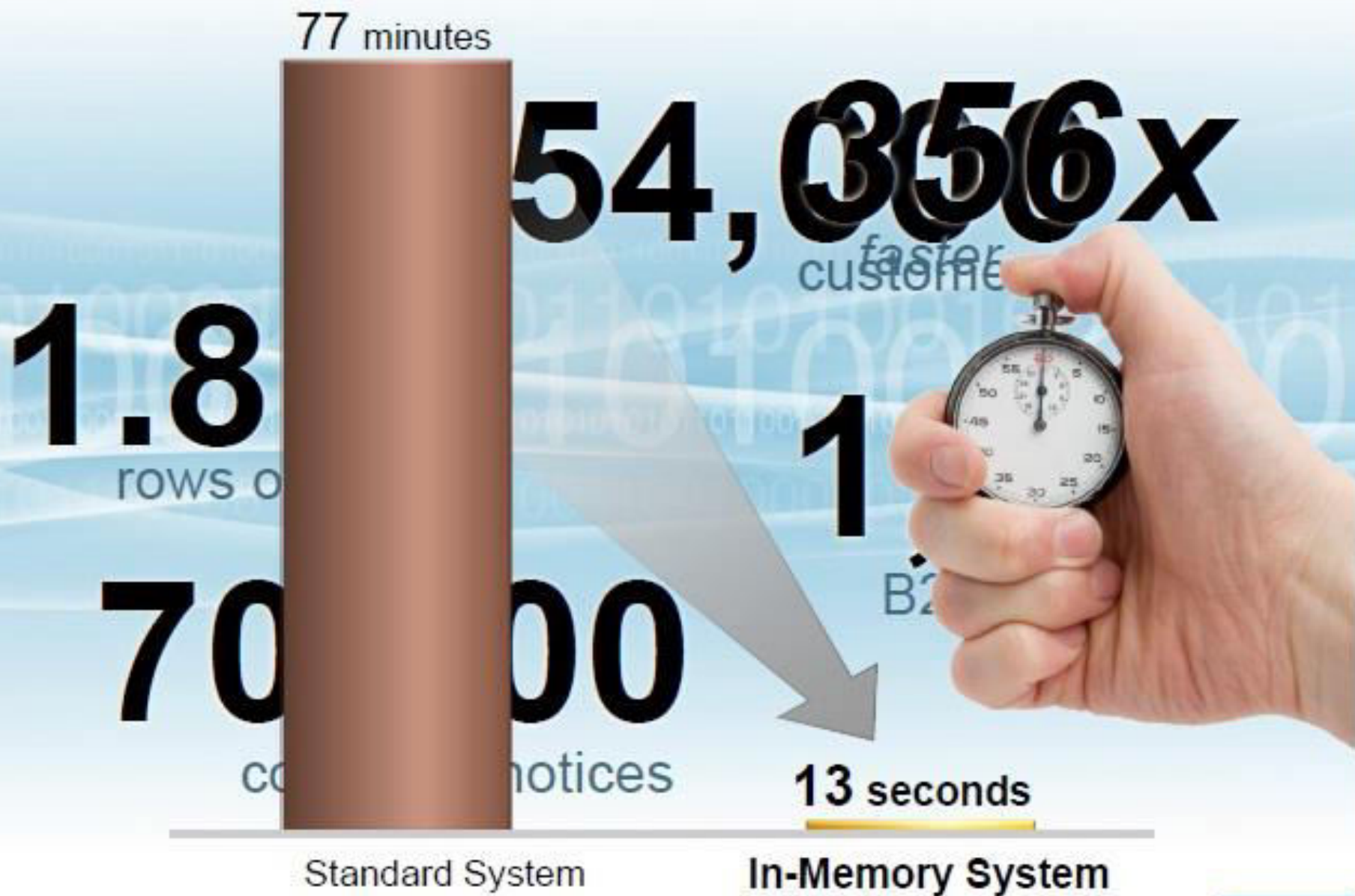
- **Allows the creation of new innovated business applications** based on the SAP HANA foundation
  - Allows existing applications to directly leverage the performance power of HANA
- **Enable mixed workloads of analytics, operations, and performance management in a single system**







# SAP HANA in Action at a CPG Company



# SAP In-Memory Evolution



SAP HANA Hu



**SAP BWA**  
Accelerate BWA

**2007**



**SAP Explorer**  
Open Acceleration  
Self-Service BI

**2009**



**SAP HANA**  
In-Memory Platform  
Real-Time Analytics  
Content/Applications  
Accelerated BI

**2010+**



# SAP HANA: Value Proposition

Addressing Key Business Drivers



## 1. Real-Time Decision Making

- Fast and easy creation of ad-hoc views on business
- Access to real time analysis

## 2. Accelerate Business Performance

- Increase speed of transactional information flow in areas such as planning, forecasting, pricing, offers...

## 3. Unlock New Insights

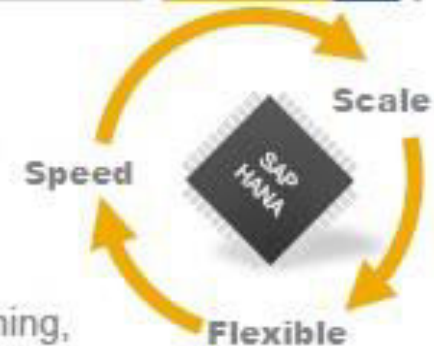
- Remove constraints for analyzing large data volumes - trends, data mining, predictive analytics etc.
- Structured and unstructured data

## 4. Improve Business Productivity

- Business designed and owned analytical models
- Business self-service → reduce reliance on IT
- Use data from anywhere

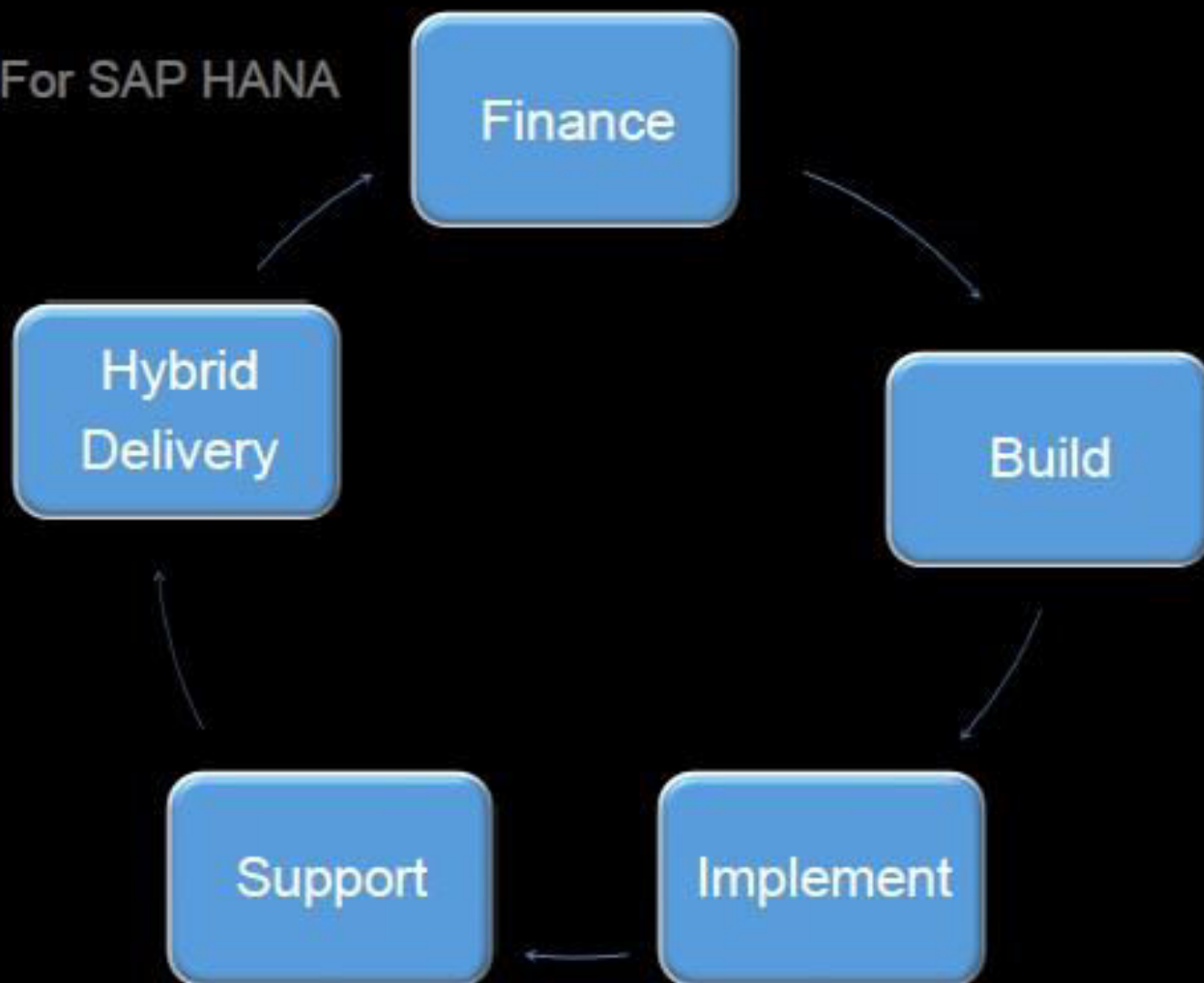
## 5. Improve IT efficiency

- Manage growing data volume and complexity efficiently
- Lower landscape costs



# HP'S PORTFOLIO FOR SAP HANA

One-Stop For SAP HANA



# HP PURPOSE-BUILT HARDWARE FOR SAP HANA

Industry leading performance tuned appliance



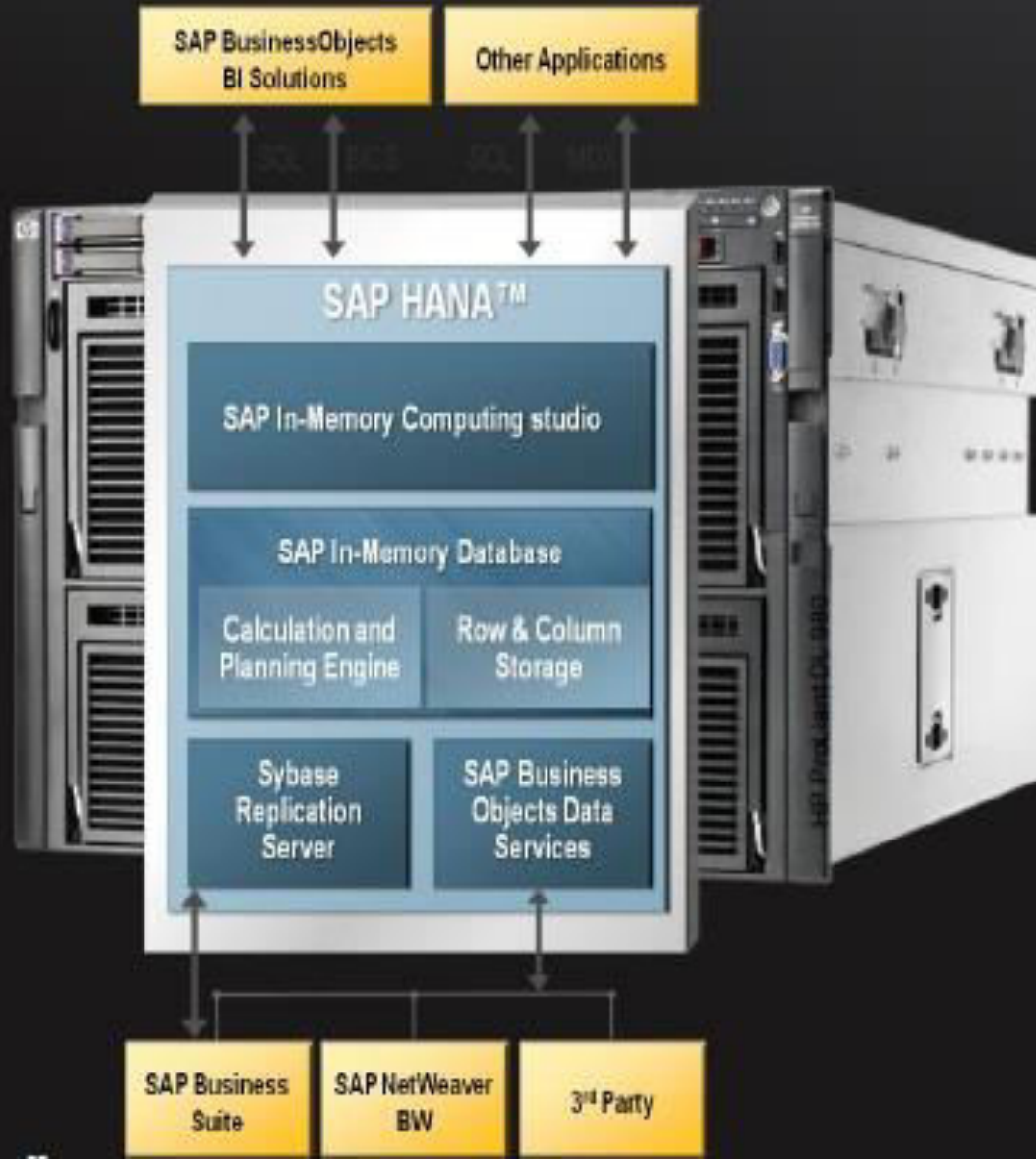
## HP SAP HANA Configurations

- Small-Medium-Large-X large sizes
- HP ProLiant DL580 & DL980 G7 servers with Intel® Nehalem processors
- Factory configured for SAP HANA



# HP PURPOSE-BUILT HARDWARE FOR SAP HANA

Industry leading performance tuned appliance



## HP SAP HANA Configurations

- Small-Medium-Large-X large sizes
- HP ProLiant DL580 & DL980 G7 servers with Intel® Nehalem processors
- Factory configured for SAP HANA

# Support

HP post go-live solution support and hardware support

HP

HP Critical Advantage for HP SAP HANA

